

Esmee Master Issuer

Report date: 30 September 2015

PORTFOLIO REPORT

Portfolio Report:

Reporting month as of ultimo:

Esmee Master IssuerSeptember 2015

Key Characteristics

Oustanding Principal Balance (EUR)	7,799,892,709
Average Loan Size (EUR)	62,205
Average Client Size (EUR)	125,778
Number of Loans	125,390
Number of Clients	62,013
Weighted Average PD (%)	4.29%
Weighted Average LGD (%)	9.87%
Weighted Average Interest Rate (%)	3.58%
Weighted Average Seasoning (years)	4.31
Weighted Average Remaining Maturity (years)	7.75
Weighted Average WAL (years)	4.17
Yearly Expected Loss (%) (WAPD*WALGD)	0.42%
Expected Loss (%) (WAPD*WALGD*AvgLife)	1.76%
WA Tot Collateral Ratio	242.15%

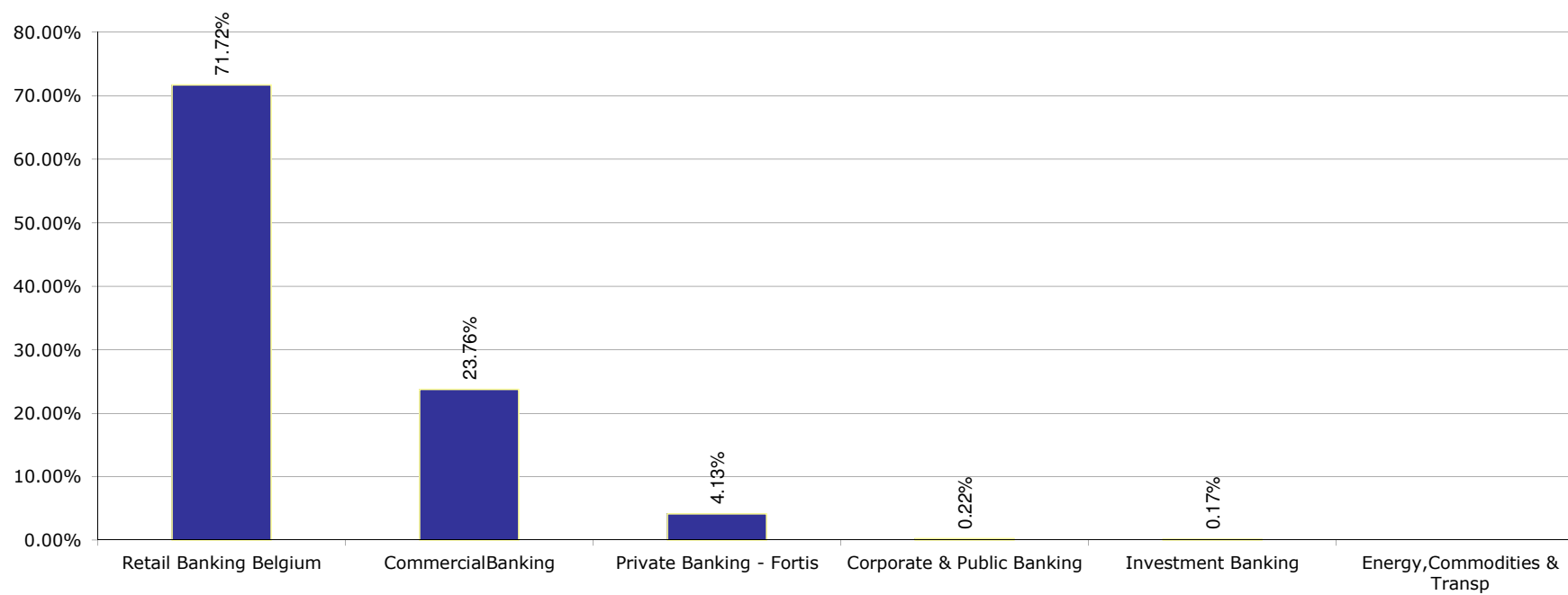
Portfolio Report:

Reporting month as of ultimo:

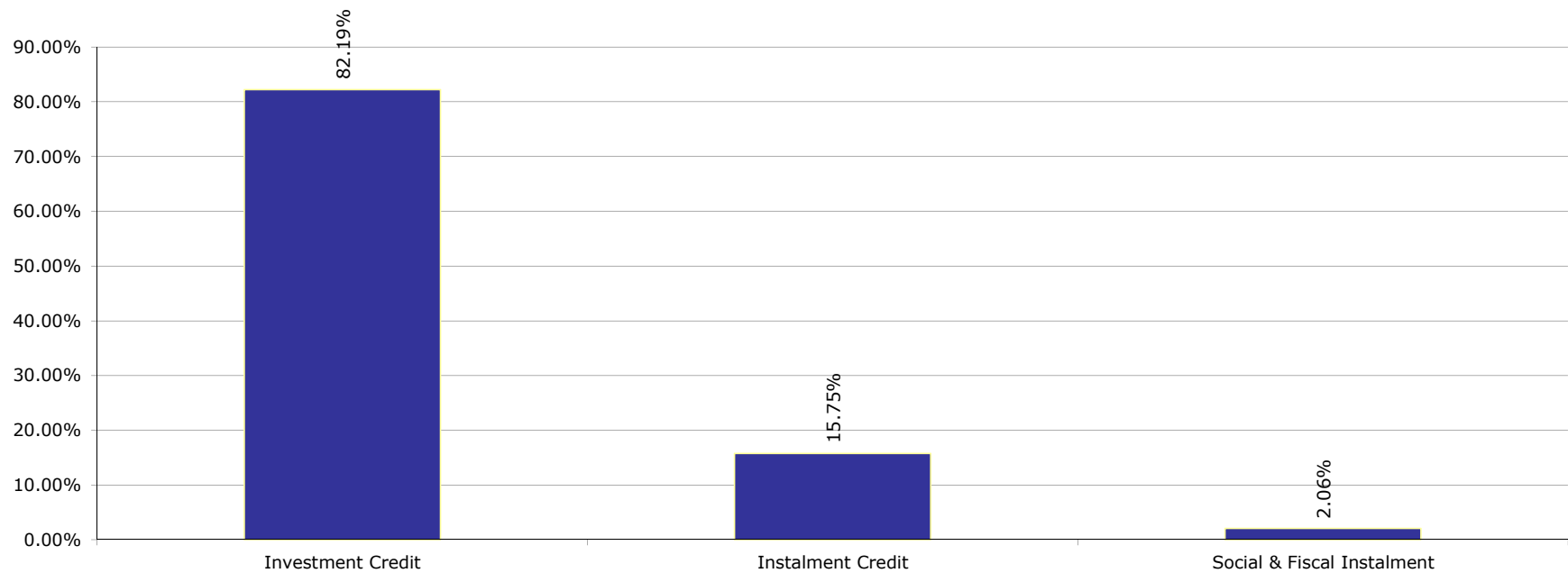
Esmee Master Issuer

September 2015

Business Unit



Products



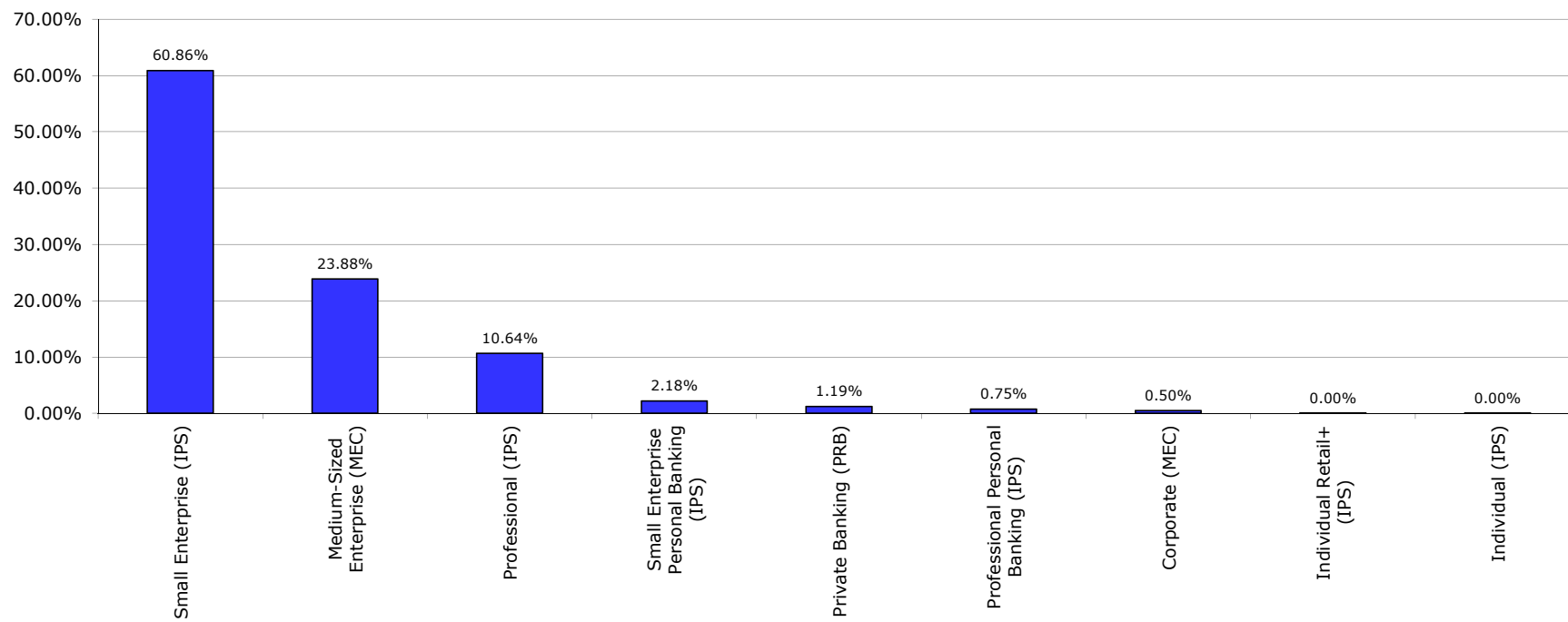
Portfolio Report:

Reporting month as of ultimo:

Esmee Master Issuer

September 2015

Market Segment



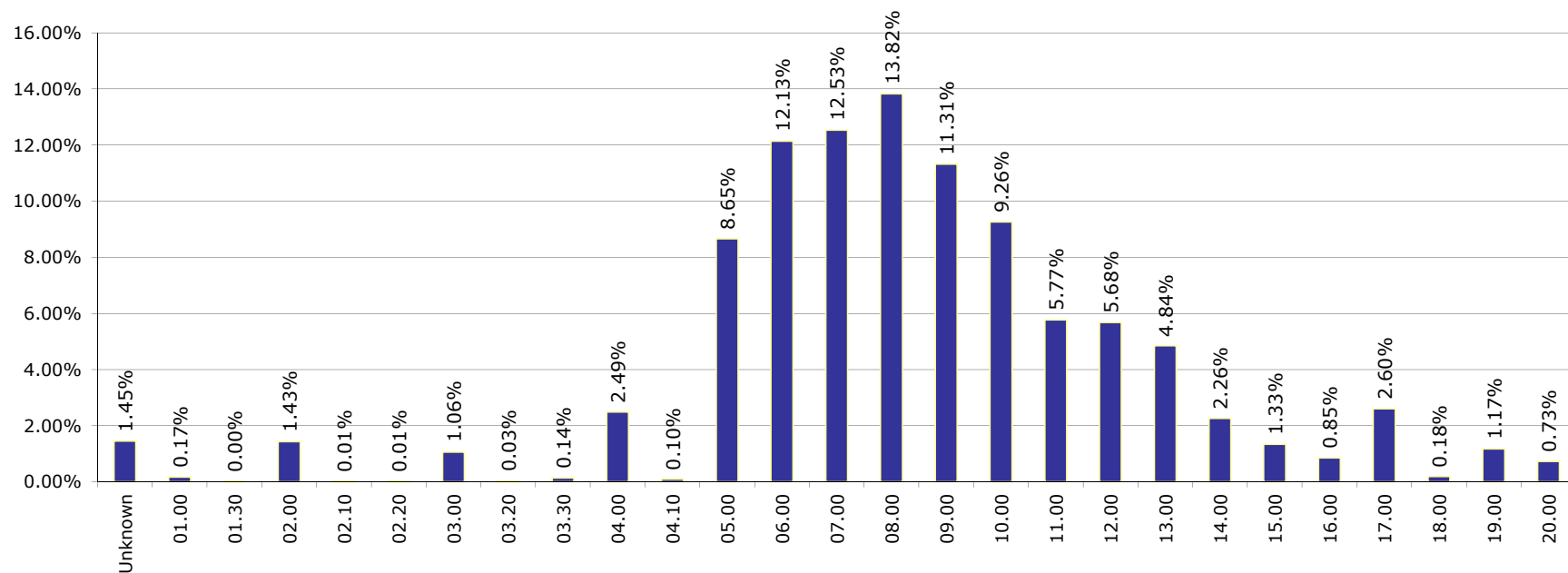
Portfolio Report:

Reporting month as of ultimo:

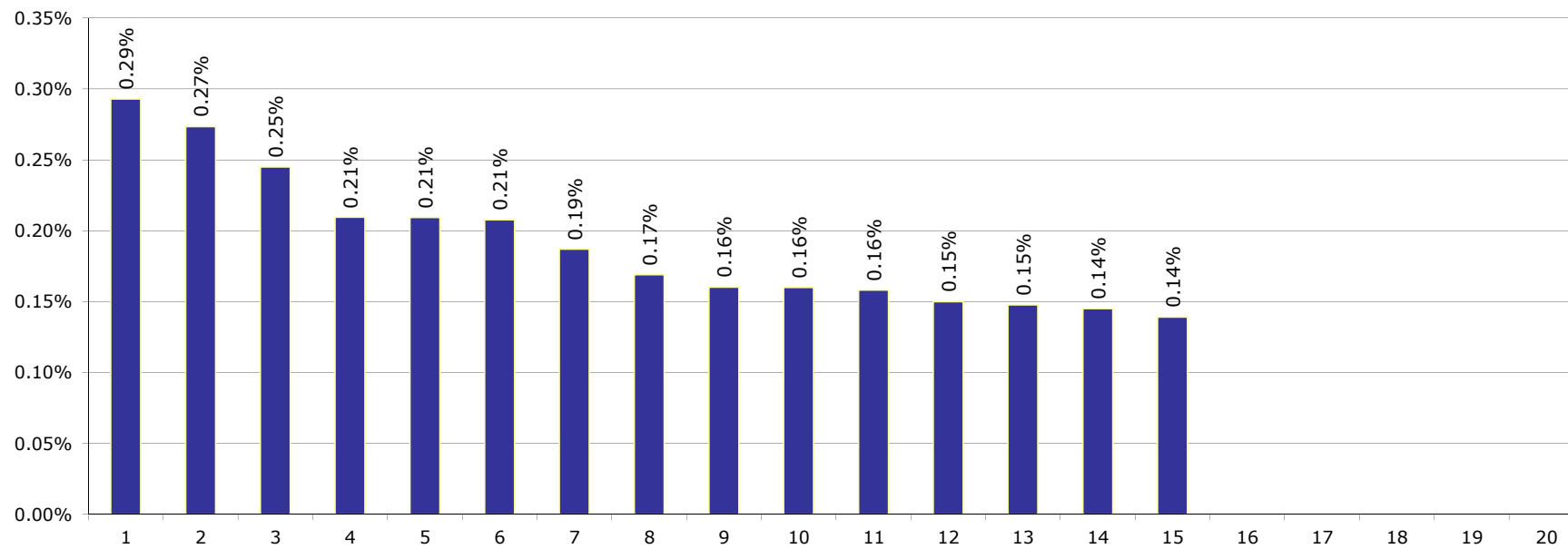
Esmee Master Issuer

September 2015

Internal Rating



Top 20 Clients



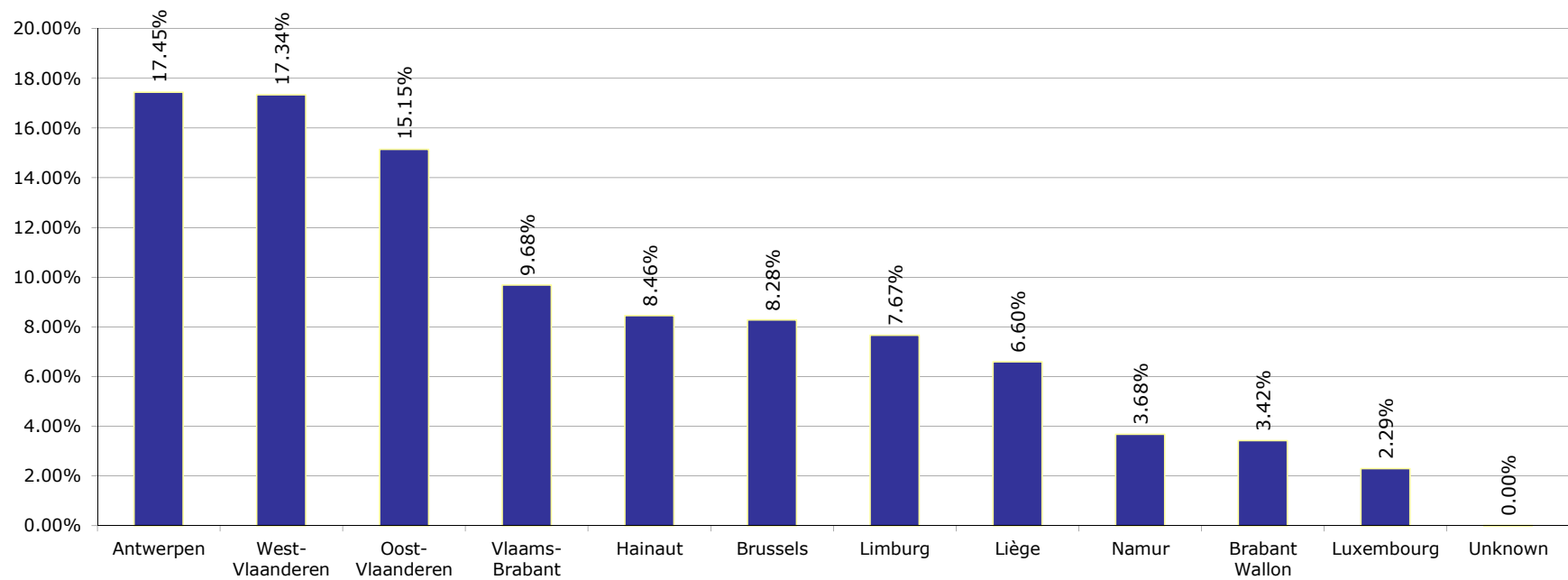
Portfolio Report:

Reporting month as of ultimo:

Esmee Master Issuer

September 2015

Client Province



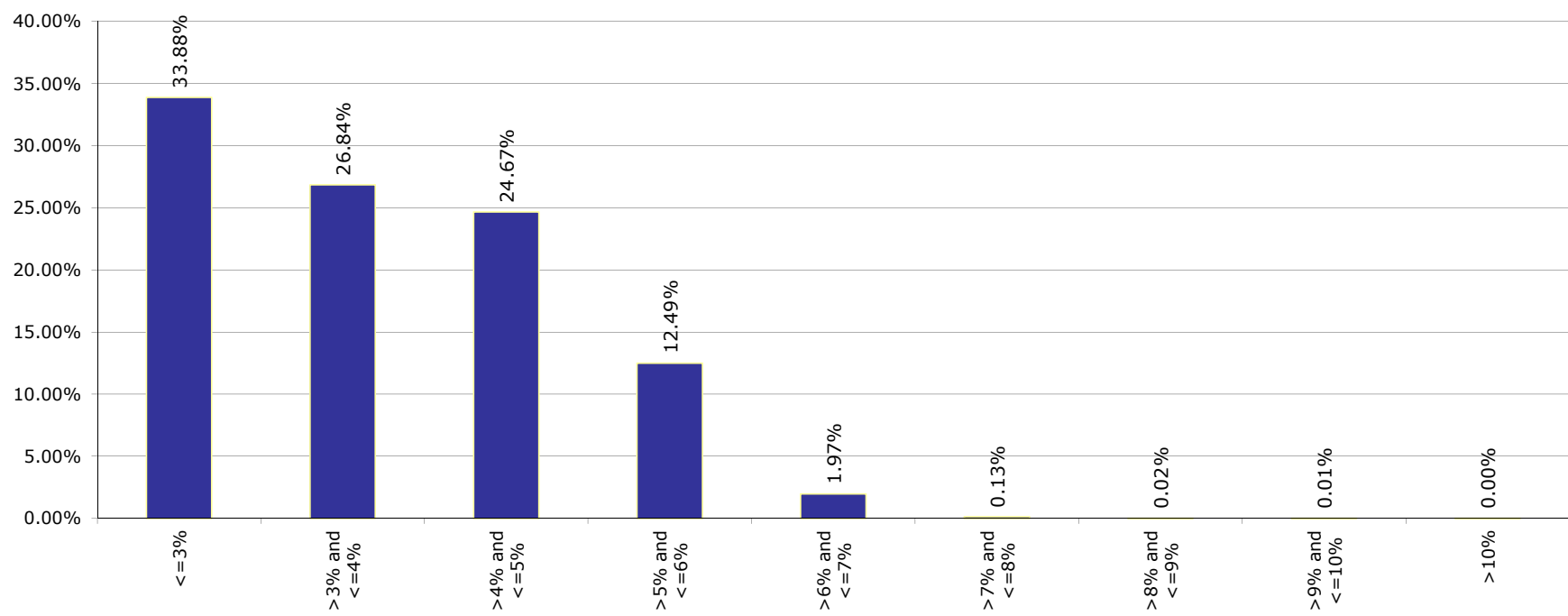
Portfolio Report:

Reporting month as of ultimo:

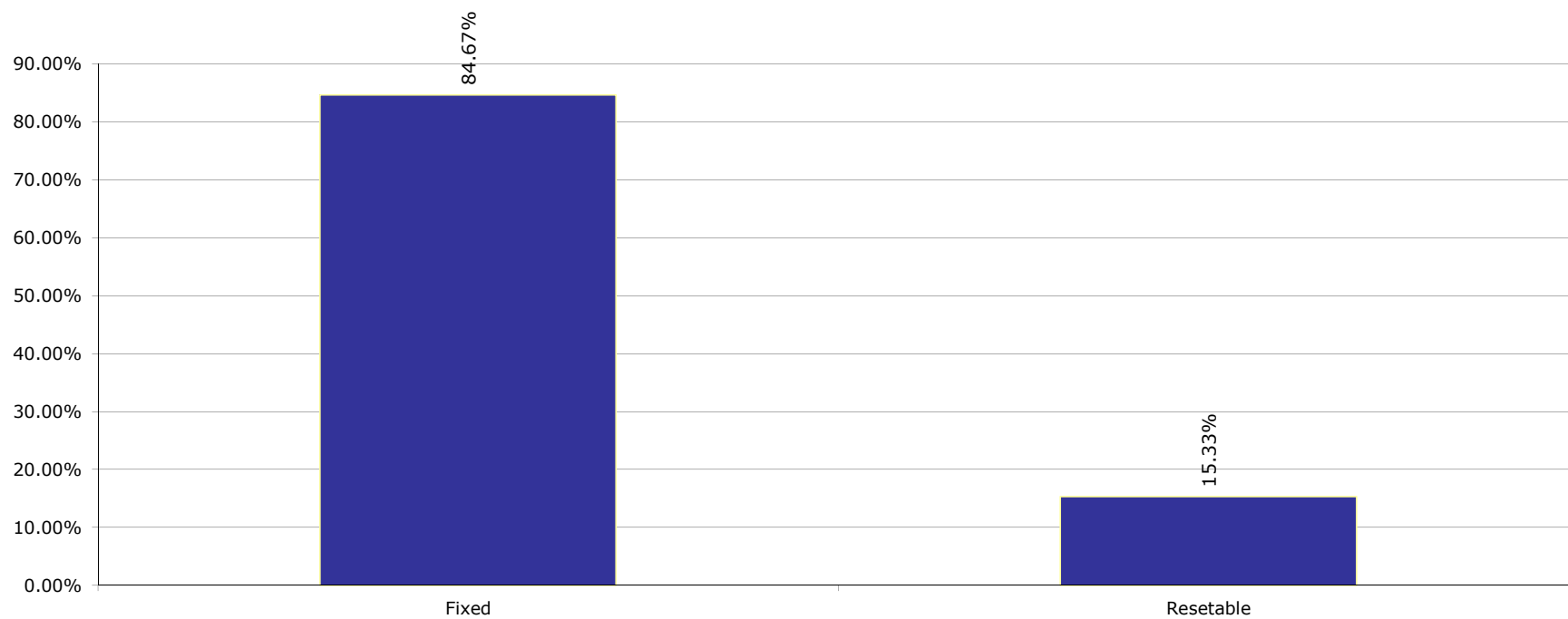
Esmee Master Issuer

September 2015

Interest Rate



Interest Rate Type



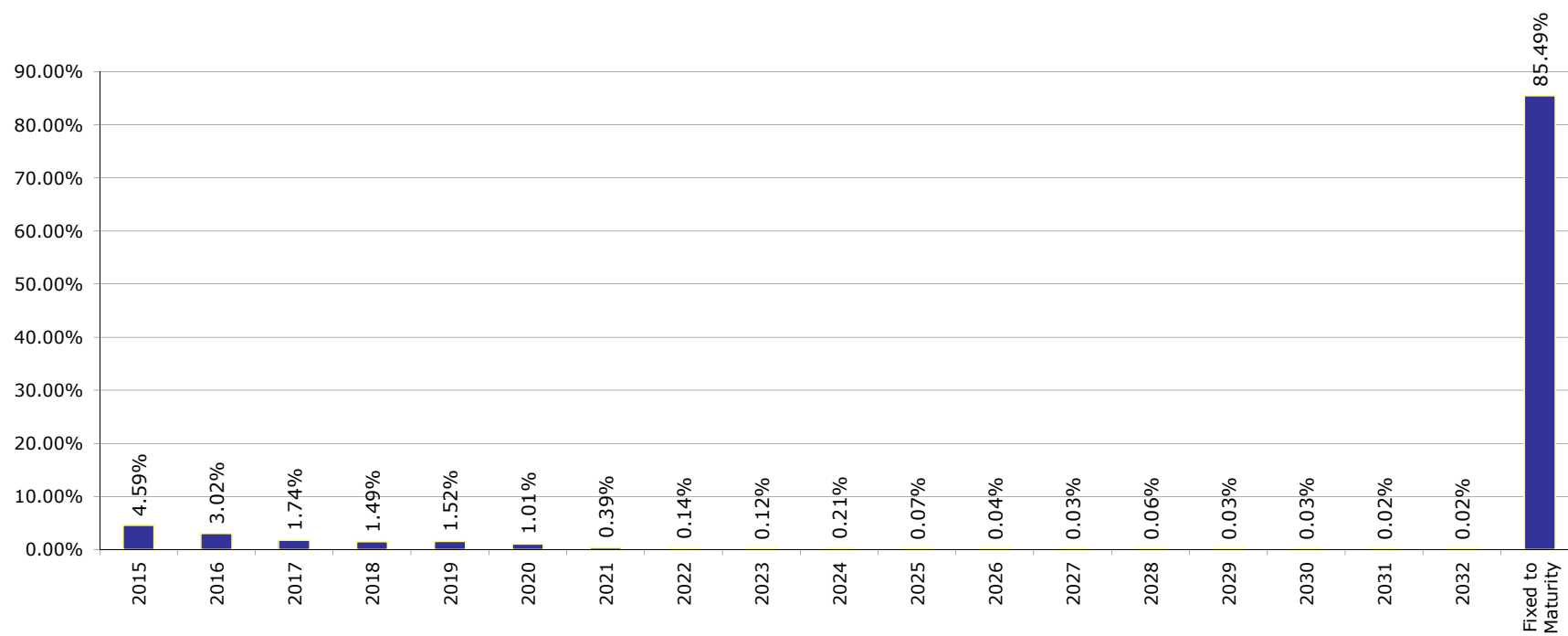
Portfolio Report:

Reporting month as of ultimo:

Esmee Master Issuer

September 2015

Next Rest Date



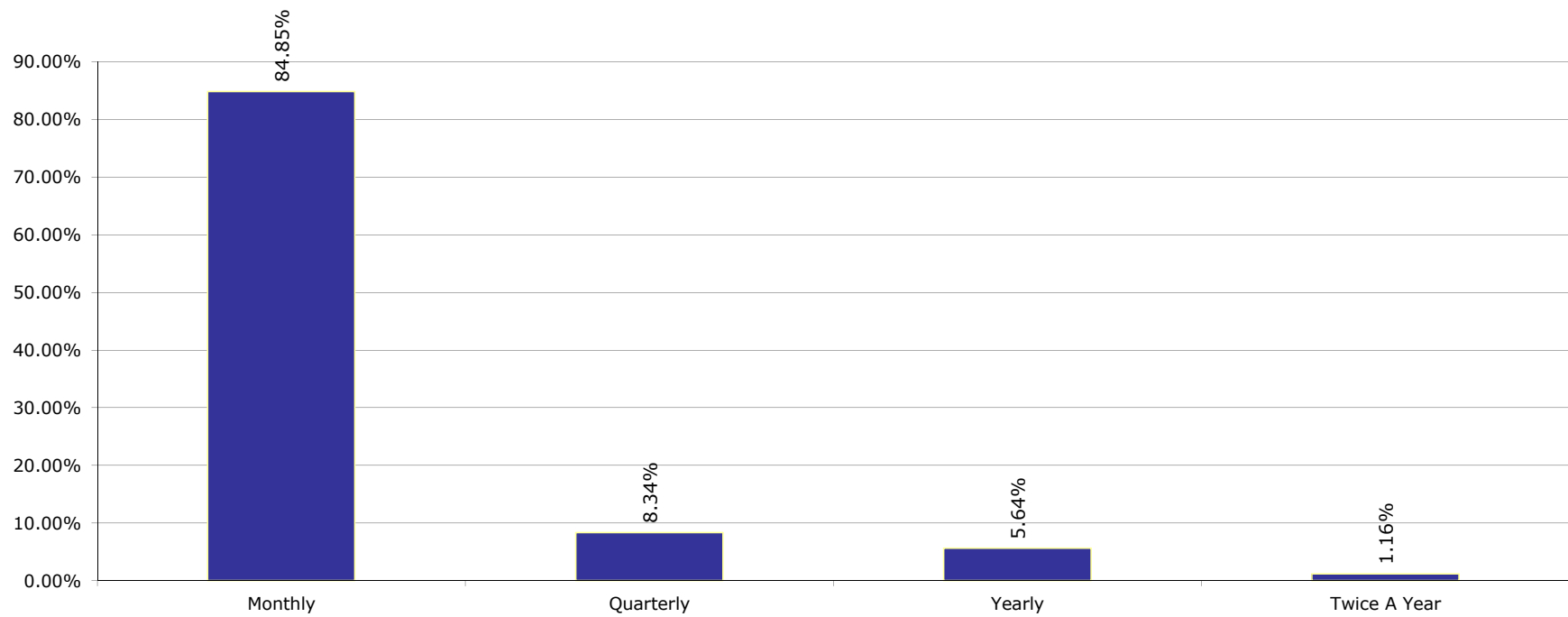
Portfolio Report:

Reporting month as of ultimo:

Esmee Master Issuer

September 2015

Int. Payment Frequency



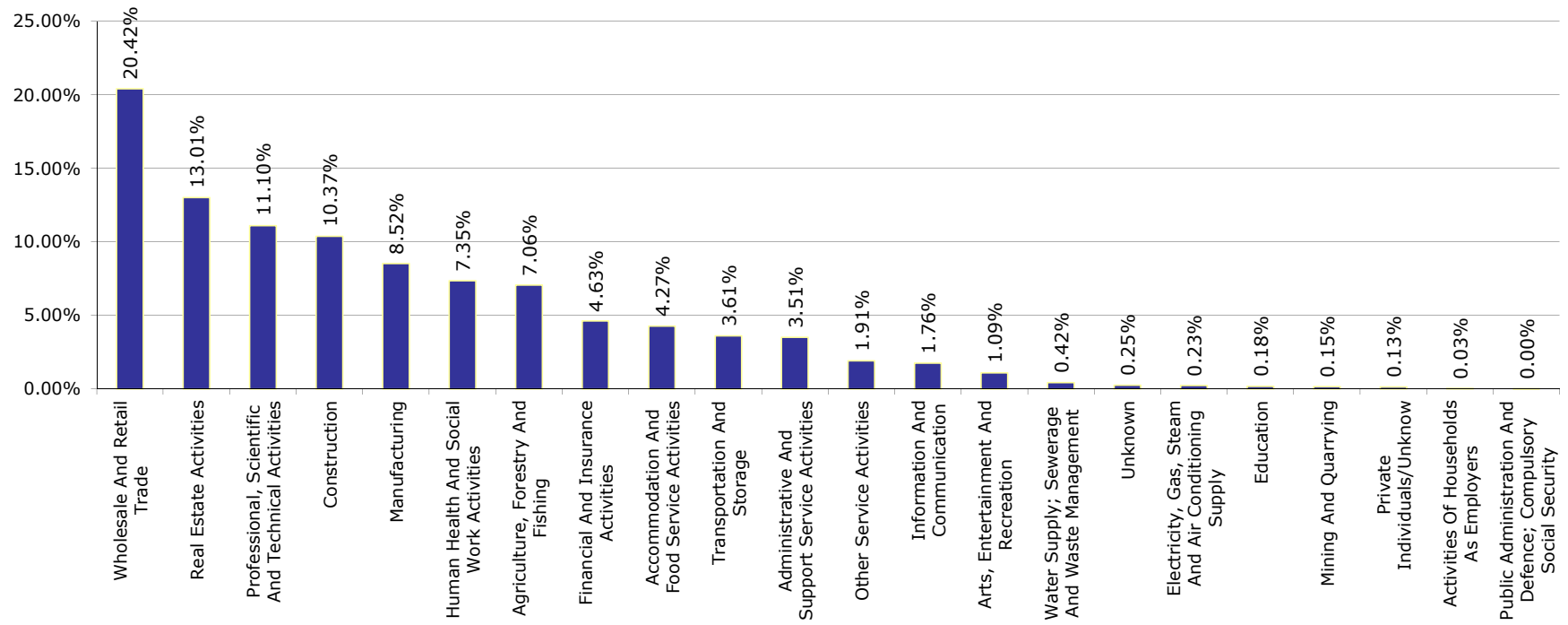
Portfolio Report:

Reporting month as of ultimo:

Esmee Master Issuer

September 2015

Sectors (Nace rev.2)



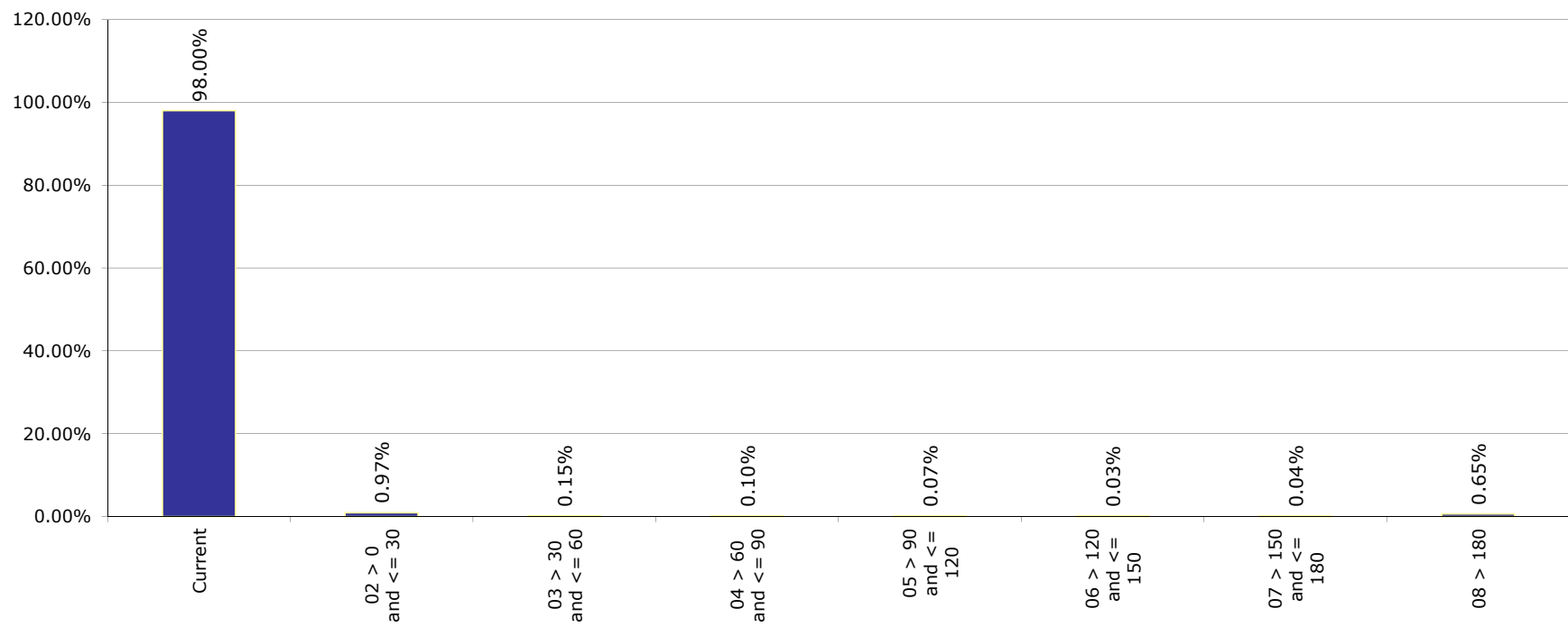
Portfolio Report:

Reporting month as of ultimo:

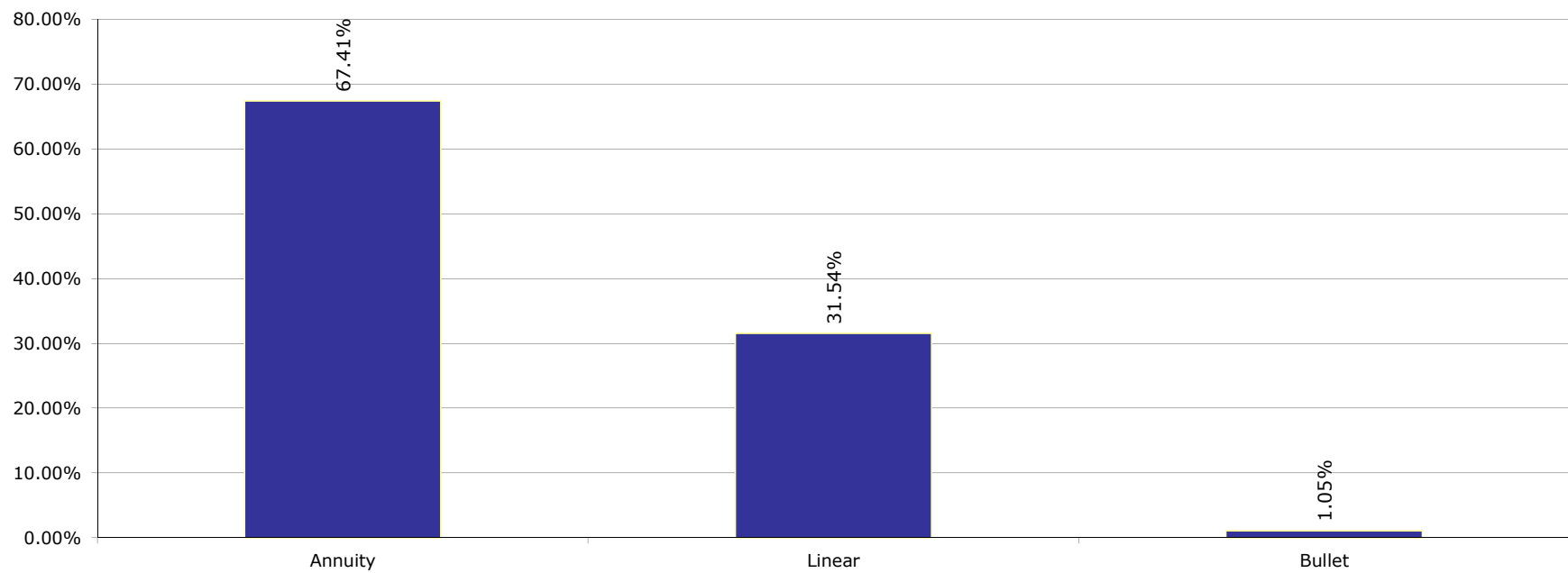
Esmee Master Issuer

September 2015

Arrears



Redemption Type



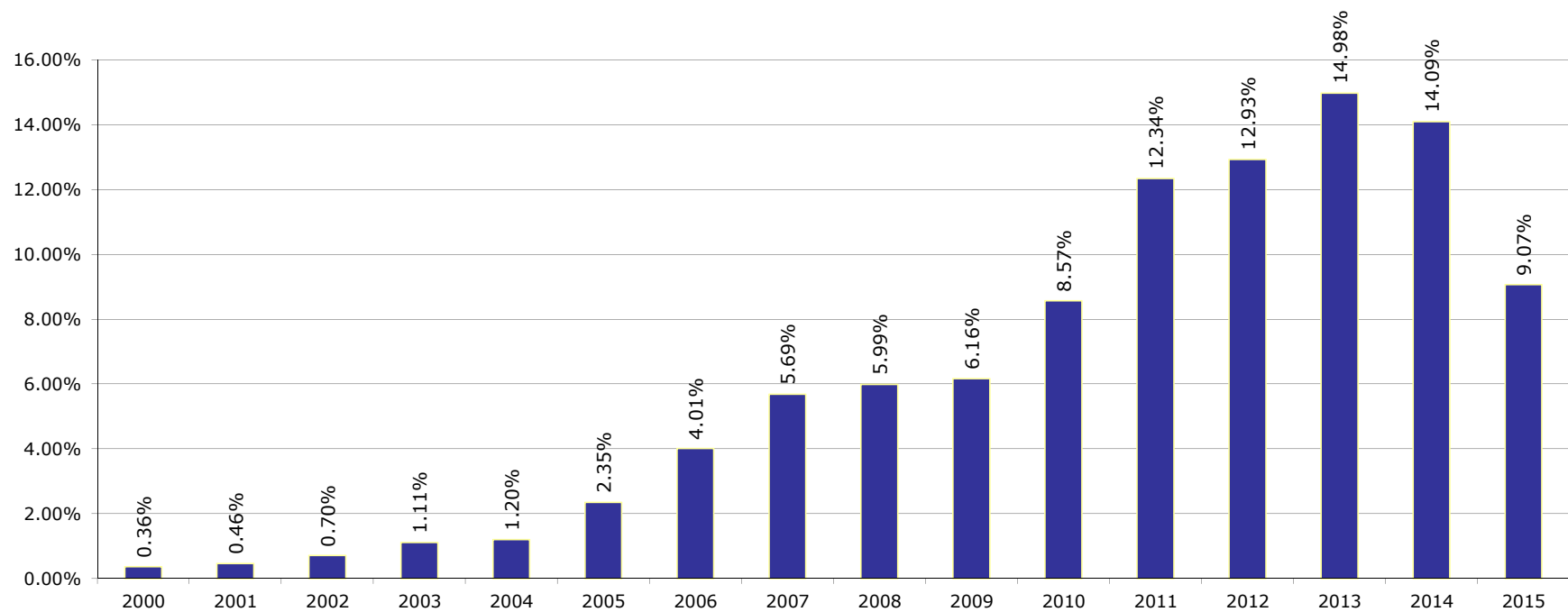
Portfolio Report:

Reporting month as of ultimo:

Esmee Master Issuer

September 2015

Origination Year



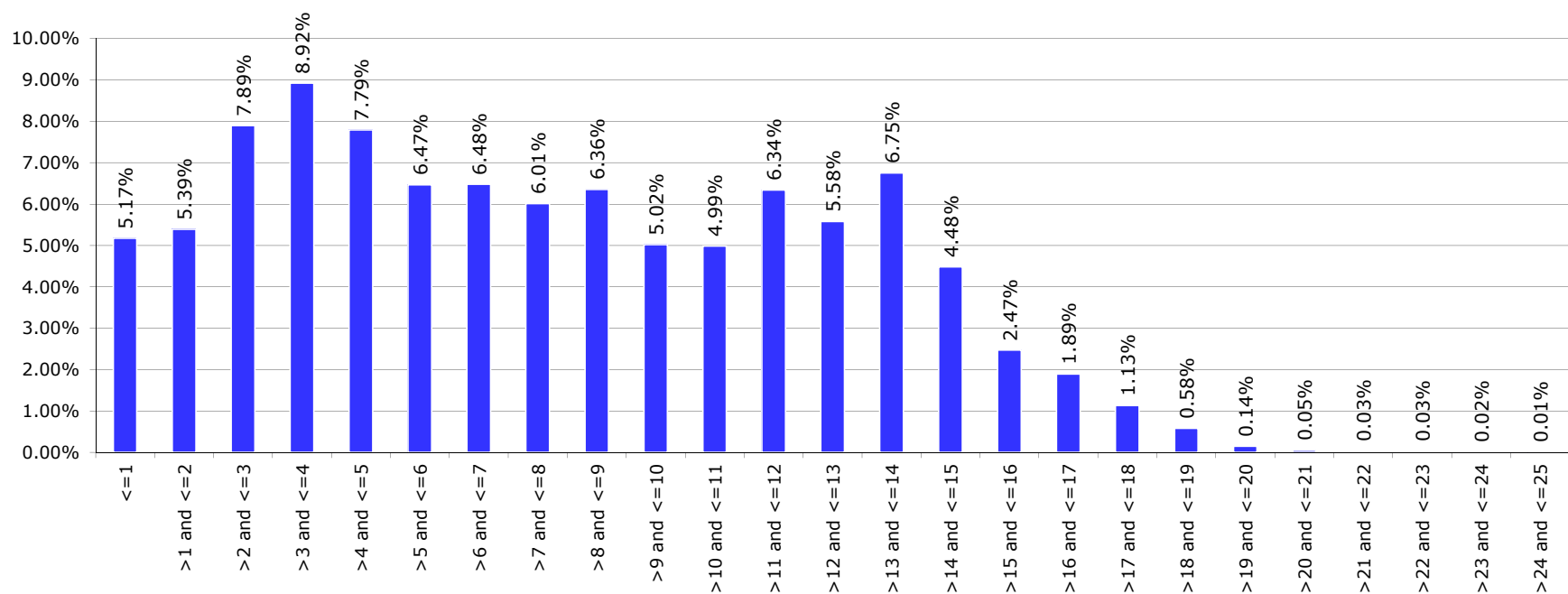
Portfolio Report:

Reporting month as of ultimo:

Esmee Master Issuer

September 2015

Remaining Maturity



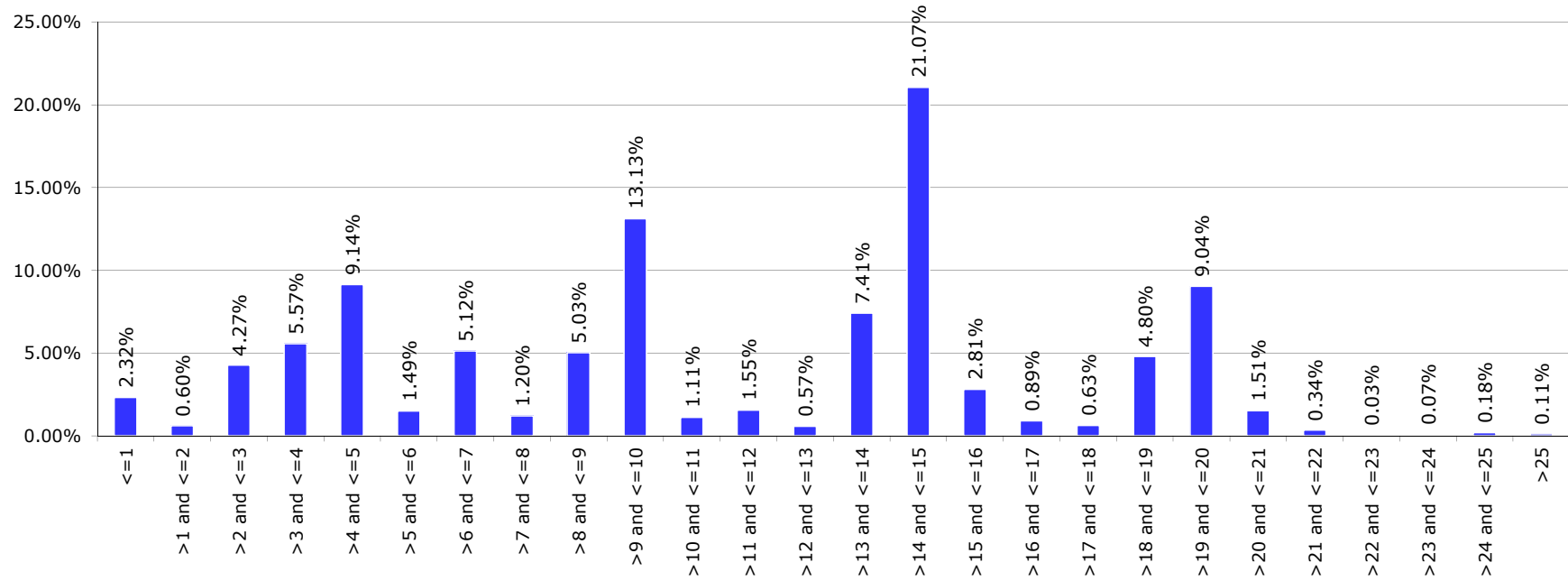
Portfolio Report:

Reporting month as of ultimo:

Esmee Master Issuer

September 2015

Original Maturity



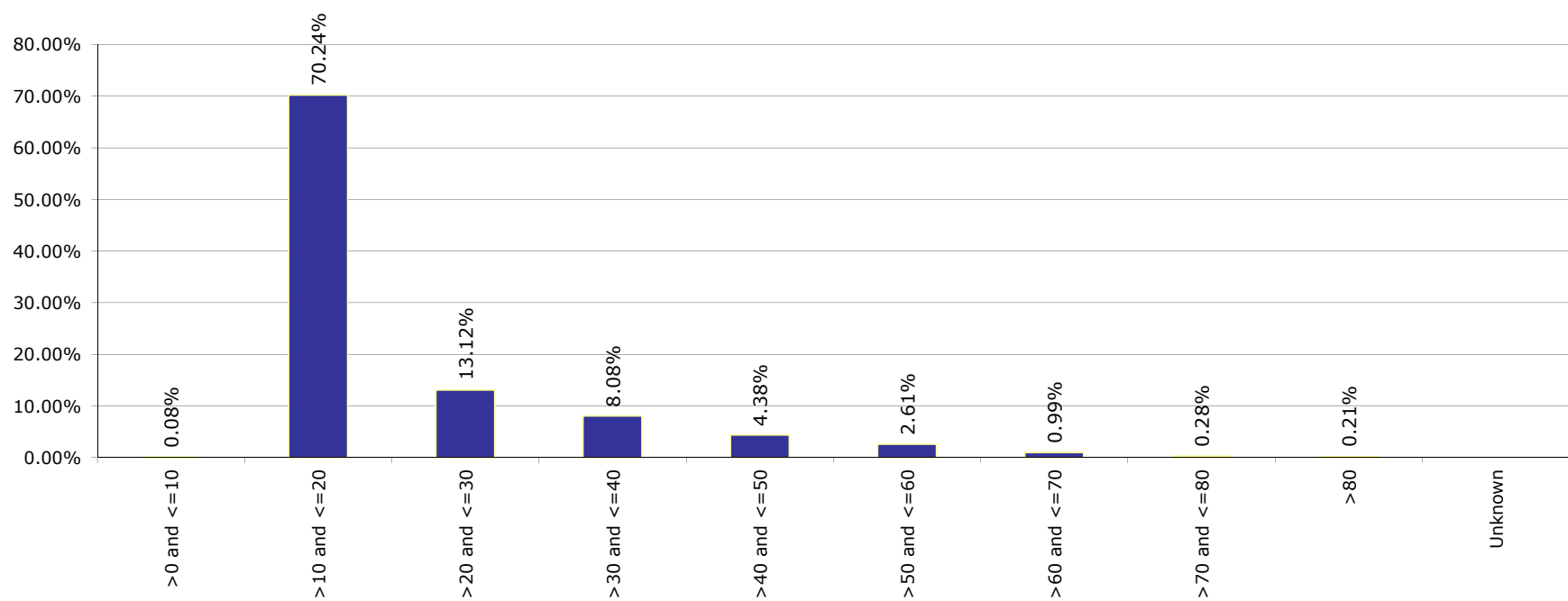
Portfolio Report:

Reporting month as of ultimo:

Esmee Master Issuer

September 2015

LGD



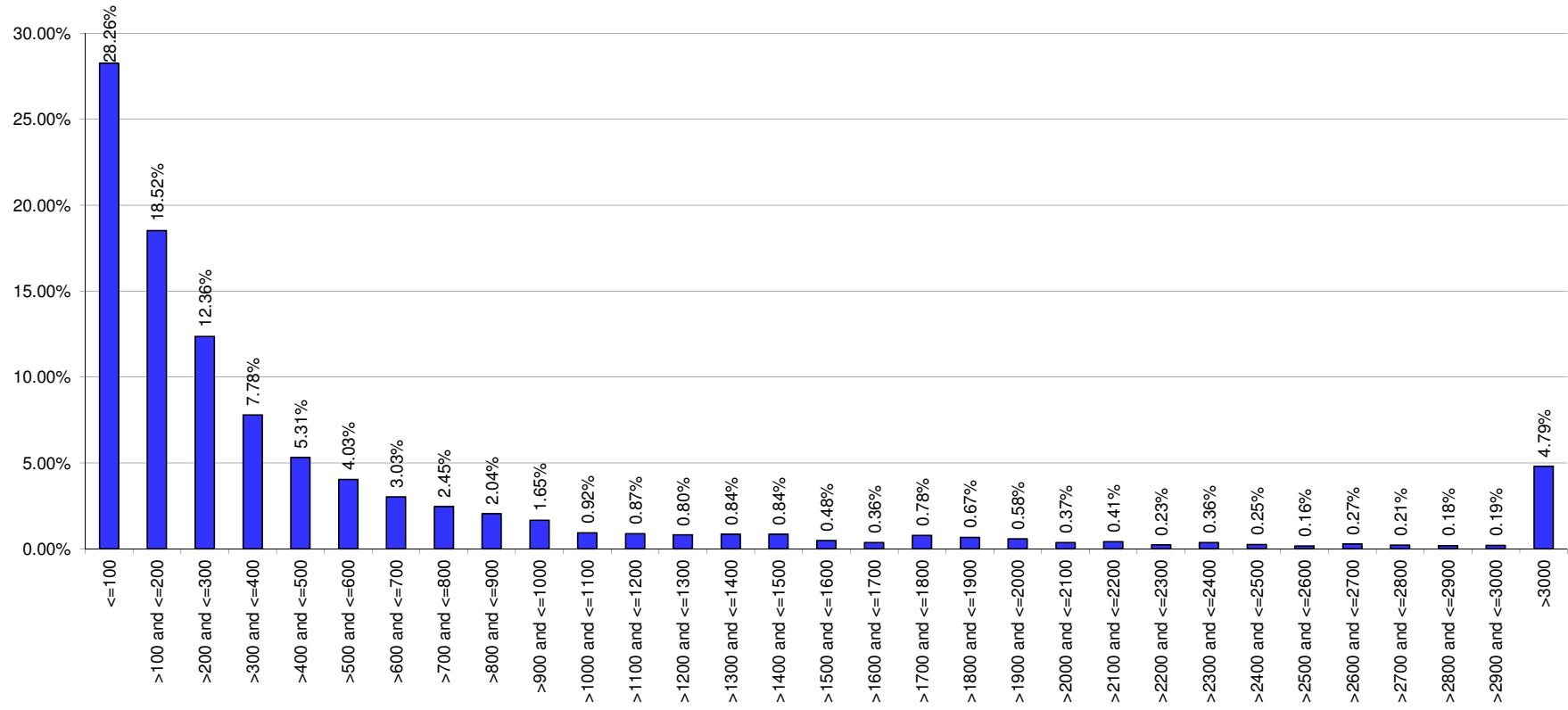
Portfolio Report:

Reporting month as of ultimo:

Esmee Master Issuer

September 2015

Size of Loans



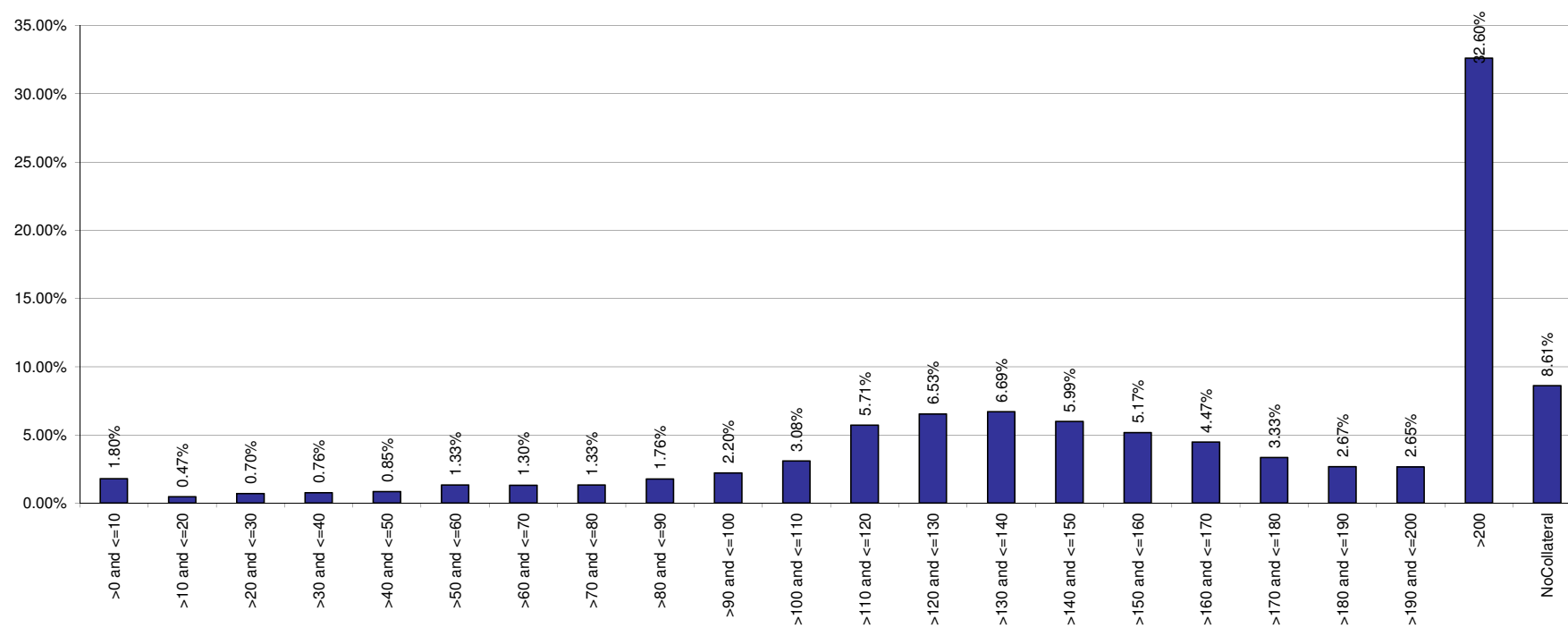
Portfolio Report:

Reporting month as of ultimo:

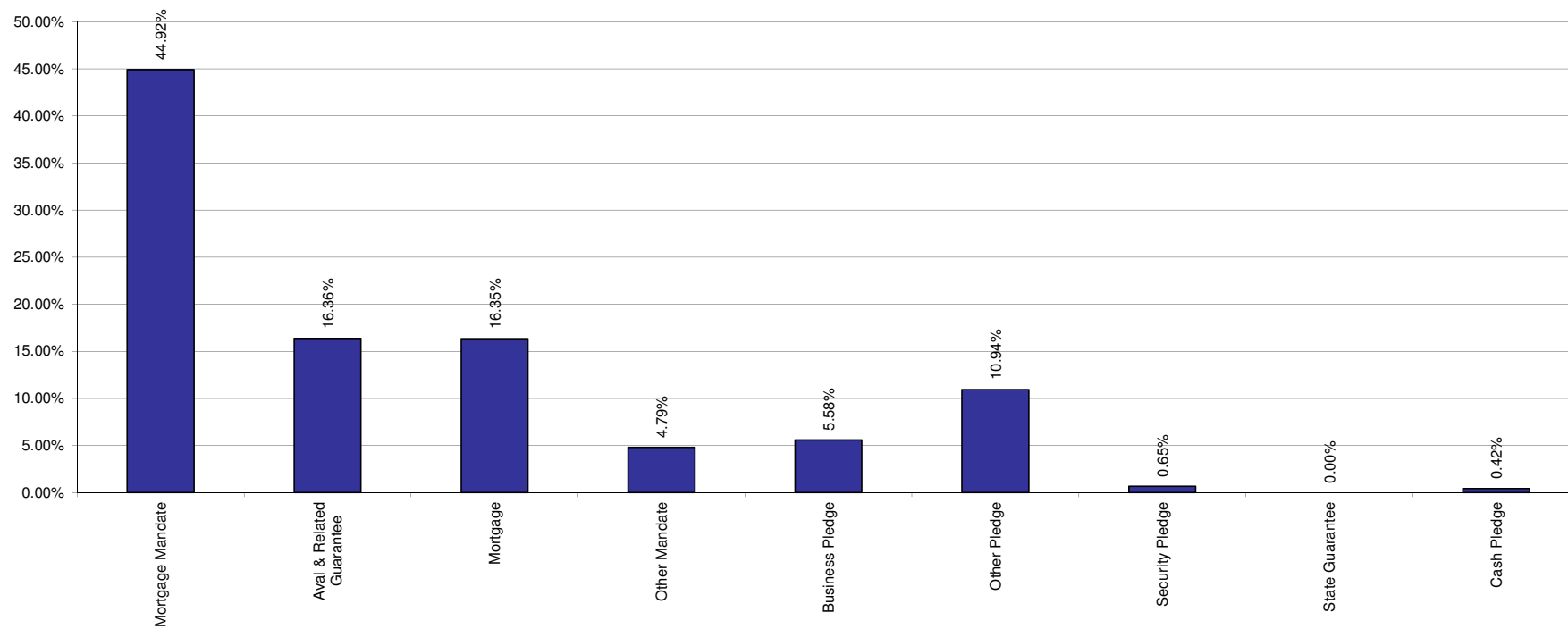
Esmee Master Issuer

September 2015

Collateral Ratio



Collaterals



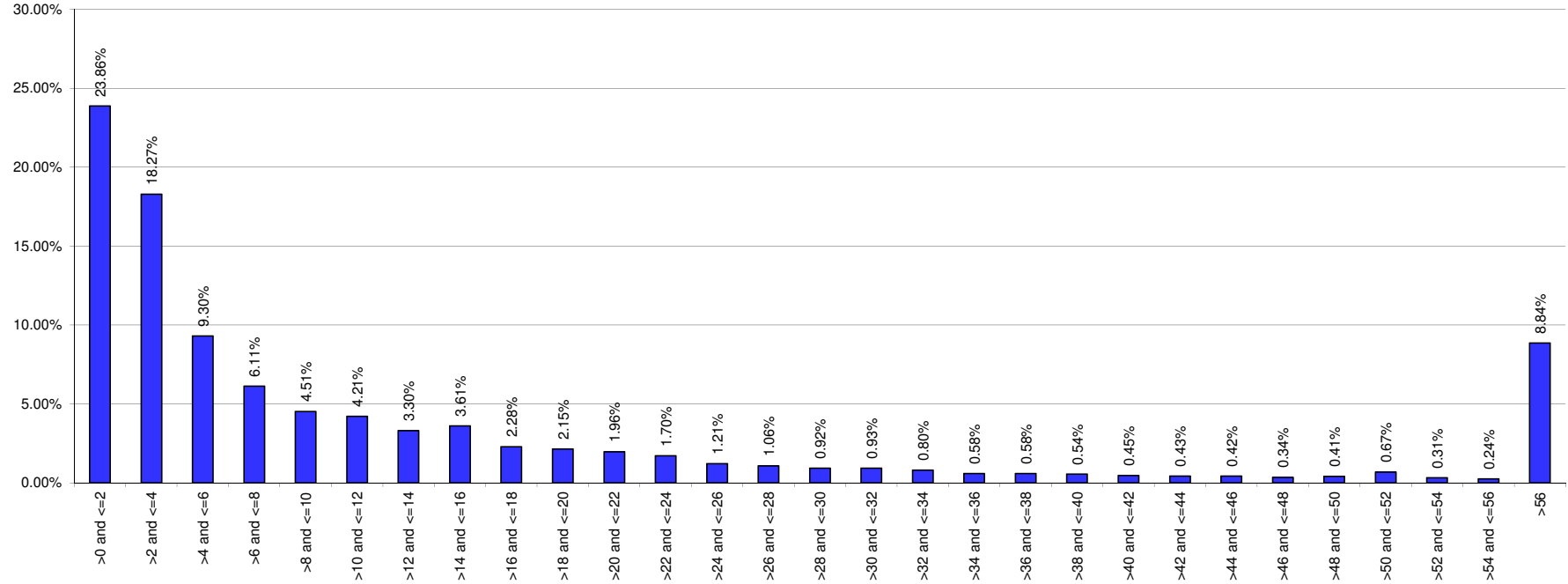
Portfolio Report:

Reporting month as of ultimo:

Esmee Master Issuer

September 2015

Yearly Expected Loss



Esmee Master Issuer

Pool Characteristics

Portfolio as of: 30-9-2015

1. Key characteristics

Outstanding Principal Balance	7,799,892,709
Nb Loans	125,390
Nb Clients	62,013
Avg Loan Size	62,205
Avg Client Size	125,778
WA PD (%)	4.29%
WA LGD (%)	9.87%
WA Int Rate (%)	3.58%
WA Seasoning (Y)	4.31
WA Rem Maturity (Y)	7.75
WA WAL (Y)	4.17
Yearly Exp Loss (%) (WAPD*WALGD)	0.42%
Exp Loss (%) (WAPD*WALGD*AvgLife)	1.76%
WA Tot Collateral Ratio	242.15%

Esmee Master Issuer

Pool Characteristics

Portfolio as of: 30-9-2015

2. Business Unit

Business Unit	Outstanding Principal	%	No. of Loans	%
Retail Banking Belgium	5,594,032,492	71.72%	112,167	89.45%
CommercialBanking	1,853,414,032	23.76%	10,502	8.38%
Private Banking - Fortis	322,245,219	4.13%	2,669	2.13%
Corporate & Public Banking	16,978,058	0.22%	27	0.02%
Investment Banking	13,222,908	0.17%	25	0.02%
Energy,Commodities & Transp	0	0.00%	0	0.00%
Total	7,799,892,709	100.00%	125,390	100.00%

Esmee Master Issuer

Pool Characteristics

Portfolio as of: 30-9-2015

3. Products

Products	Outstanding Principal	%	No. of Loans	%
Investment Credit	6,410,576,836	82.19%	46,052	36.73%
Instalment Credit	1,228,582,286	15.75%	73,653	58.74%
Social & Fiscal Instalment	160,733,587	2.06%	5,685	4.53%
Total	7,799,892,709	100.00%	125,390	100.00%

Esmee Master Issuer

Pool Characteristics

Portfolio as of: 30-9-2015

4. Market Segment

Market Segment	Outstanding Principal	%	No. of Loans	%
Small Enterprise (IPS)	4,746,780,241	60.86%	82,751	65.99%
Medium-Sized Enterprise (MEC)	1,862,363,627	23.88%	10,633	8.48%
Professional (IPS)	829,781,135	10.64%	29,057	23.17%
Small Enterprise Personal Banking (IPS)	169,954,223	2.18%	1,269	1.01%
Private Banking (PRB)	92,648,398	1.19%	149	0.12%
Professional Personal Banking (IPS)	58,486,286	0.75%	1,355	1.08%
Corporate (MEC)	39,238,761	0.50%	56	0.04%
Individual Retail+ (IPS)	325,827	0.00%	105	0.08%
Individual (IPS)	314,211	0.00%	15	0.01%
Total	7,799,892,709	100.00%	125,390	100.00%

Esmee Master Issuer

Pool Characteristics

Portfolio as of: 30-9-2015

5. Internal Rating

Internal Rating	Outstanding Principal	%	No. of Loans	%
Unknown	112,886,862	1.45%	1,618	1.29%
01.00	13,176,015	0.17%	930	0.74%
01.30	110,076	0.00%	1	0.00%
02.00	111,451,928	1.43%	2,532	2.02%
02.10	733,927	0.01%	4	0.00%
02.20	814,271	0.01%	4	0.00%
03.00	82,863,204	1.06%	3,173	2.53%
03.20	2,120,806	0.03%	4	0.00%
03.30	10,608,577	0.14%	3	0.00%
04.00	193,985,301	2.49%	5,929	4.73%
04.10	7,411,829	0.10%	8	0.01%
05.00	674,948,042	8.65%	13,547	10.80%
06.00	946,166,474	12.13%	16,268	12.97%
07.00	977,381,086	12.53%	15,175	12.10%
08.00	1,078,270,438	13.82%	14,733	11.75%
09.00	882,504,713	11.31%	11,317	9.03%
10.00	721,957,956	9.26%	8,998	7.18%
11.00	449,687,213	5.77%	6,553	5.23%
12.00	442,740,917	5.68%	6,506	5.19%
13.00	377,666,092	4.84%	5,357	4.27%
14.00	176,352,736	2.26%	2,619	2.09%
15.00	104,102,882	1.33%	1,492	1.19%
16.00	66,217,257	0.85%	1,304	1.04%
17.00	202,900,635	2.60%	3,472	2.77%
18.00	14,404,149	0.18%	242	0.19%
19.00	91,525,609	1.17%	896	0.71%
20.00	56,903,714	0.73%	2,705	2.16%
Total	7,799,892,709	100.00%	125,390	100.00%

Esmee Master Issuer

Pool Characteristics

Portfolio as of: 30-9-2015

6. Top 20 Clients

Top 20 Clients	Outstanding Principal	%	Internal Rating
1	22,852,974	0.29%	08.00
2	21,334,682	0.27%	12.00
3	19,112,296	0.25%	10.00
4	16,340,049	0.21%	05.00
5	16,335,000	0.21%	02.00
6	16,208,292	0.21%	10.00
7	14,580,000	0.19%	02.00
8	13,183,336	0.17%	08.00
9	12,500,000	0.16%	12.00
10	12,480,385	0.16%	09.00
11	12,328,214	0.16%	09.00
12	11,702,367	0.15%	10.00
13	11,516,252	0.15%	06.00
14	11,308,337	0.14%	08.00
15	10,853,476	0.14%	10.00
16	0	0.00%	0
17	0	0.00%	0
18	0	0.00%	0
19	0	0.00%	0
20	0	0.00%	0
Total	222,635,660	2.85%	

Esmee Master Issuer

Pool Characteristics

Portfolio as of: 30-9-2015

7. Client Province

Client Province	Outstanding Principal	%	No. of Loans	%
Antwerpen	1,360,767,605	17.45%	19,377	15.45%
West-Vlaanderen	1,352,168,809	17.34%	20,119	16.05%
Oost-Vlaanderen	1,181,397,988	15.15%	19,070	15.21%
Vlaams-Brabant	755,289,963	9.68%	11,617	9.26%
Hainaut	659,548,241	8.46%	11,877	9.47%
Brussels	645,452,744	8.28%	8,779	7.00%
Limburg	597,961,376	7.67%	9,623	7.67%
Liège	514,594,499	6.60%	10,506	8.38%
Namur	287,120,447	3.68%	5,897	4.70%
Brabant Wallon	266,786,592	3.42%	4,911	3.92%
Luxembourg	178,784,552	2.29%	3,612	2.88%
Unknown	19,893	0.00%	2	0.00%
Total	7,799,892,709	100.00%	125,390	100.00%

Esmee Master Issuer

Pool Characteristics

Portfolio as of: 30-9-2015

8. Interest Rate

Interest Rate	Outstanding Principal	%	No. of Loans	%
<=3%	2,642,695,999	33.88%	49,687	39.63%
>3% and <=4%	2,093,368,134.80	26.84%	35,451	28.27%
>4% and <=5%	1,923,853,212.10	24.67%	23,815	18.99%
>5% and <=6%	973,841,959.75	12.49%	11,916	9.50%
>6% and <=7%	153,572,564.88	1.97%	3,728	2.97%
>7% and <=8%	10,417,759.82	0.13%	517	0.41%
>8% and <=9%	1,371,724.03	0.02%	170	0.14%
>9% and <=10%	401,991.55	0.01%	51	0.04%
>10%	369,363.12	0.00%	55	0.04%
Total	7,799,892,709	100.00%	125,390	100.00%

Esmee Master Issuer

Pool Characteristics

Portfolio as of: 30-9-2015

9. Interest Rate Type

Ranges (in year)	Outstanding Principal	%	No. of Loans	%
Fixed	6,604,371,219	84.67%	118,363	94.40%
Resetable	1,195,521,490	15.33%	7,027	5.60%
Total	7,799,892,709	100.00%	125,390	100.00%

Esmee Master Issuer

Pool Characteristics

Portfolio as of: 30-9-2015

10. Next Reset Date

Next Reset Date	Outstanding Principal	%	No. of Loans	%
2015	357,871,009	4.59%	1,581	1.26%
2016	235,759,500	3.02%	1,575	1.26%
2017	135,650,046	1.74%	776	0.62%
2018	115,896,151	1.49%	625	0.50%
2019	118,505,160	1.52%	538	0.43%
2020	79,030,100	1.01%	399	0.32%
2021	30,333,123	0.39%	107	0.09%
2022	10,566,233	0.14%	46	0.04%
2023	9,282,612	0.12%	37	0.03%
2024	16,279,425	0.21%	29	0.02%
2025	5,708,465	0.07%	14	0.01%
2026	2,803,490	0.04%	8	0.01%
2027	2,259,737	0.03%	12	0.01%
2028	4,464,767	0.06%	15	0.01%
2029	2,403,803	0.03%	11	0.01%
2030	2,240,070	0.03%	7	0.01%
2031	1,365,748	0.02%	5	0.00%
2032	1,217,986	0.02%	3	0.00%
Fixed to Maturity	6,668,255,281	85.49%	119,602	95.38%
Total	7,799,892,709	100.00%	125,390	100.00%

Esmee Master Issuer

Pool Characteristics

Portfolio as of: 30-9-2015

11. Int. Payment Frequency

Int. Payment Freq.	Outstanding Principal	%	No. of Loans	%
Monthly	6,618,436,131	84.85%	117,357	93.59%
Quarterly	650,862,026	8.34%	2,037	1.62%
Yearly	440,084,652	5.64%	5,386	4.30%
Twice A Year	90,482,895	1.16%	608	0.48%
Unknown	27,005	0.00%	2	0.00%
Total	7,799,892,709	100.00%	125,390	100.00%

Esmee Master Issuer

Pool Characteristics

Portfolio as of: 30-9-2015

12. Sectors (Nace rev.2)

Sectors (Nave rev.2)	Outstanding Principal	%	No. of Loans	%
Wholesale And Retail Trade	1,592,487,510	20.42%	26,578	21.20%
Real Estate Activities	1,014,712,436	13.01%	6,254	4.99%
Professional, Scientific And Technical Activities	865,568,983	11.10%	13,525	10.79%
Construction	809,054,389	10.37%	20,413	16.28%
Manufacturing	664,859,817	8.52%	9,650	7.70%
Human Health And Social Work Activities	573,005,542	7.35%	9,353	7.46%
Agriculture, Forestry And Fishing	550,538,458	7.06%	9,600	7.66%
Financial And Insurance Activities	360,781,741	4.63%	3,033	2.42%
Accommodation And Food Service Activities	332,802,037	4.27%	6,749	5.38%
Transportation And Storage	281,468,934	3.61%	4,743	3.78%
Administrative And Support Service Activities	274,151,605	3.51%	6,230	4.97%
Other Service Activities	149,202,820	1.91%	3,201	2.55%
Information And Communication	137,214,416	1.76%	2,742	2.19%
Arts, Entertainment And Recreation	85,355,283	1.09%	1,733	1.38%
Water Supply; Sewerage And Waste Management	32,771,743	0.42%	411	0.33%
Unknown	19,762,141	0.25%	514	0.41%
Electricity, Gas, Steam And Air Conditioning Supply	17,616,168	0.23%	79	0.06%
Education	13,870,565	0.18%	328	0.26%
Mining And Quarrying	11,802,153	0.15%	74	0.06%
Private Individuals/Unknow	10,167,841	0.13%	164	0.13%
Activities Of Households As Employers	2,609,882	0.03%	13	0.01%
Public Administration And Defence; Compulsory Social Security	88,245	0.00%	3	0.00%
Total	7,799,892,709	100.00%	125,390	100.00%

Esmee Master Issuer

Pool Characteristics

Portfolio as of: 30-9-2015

13. Sectors (Nace rev.2-2 Digits)

Sector name	Outstanding Principal	%	No. of Loans	%
Real estate activities	1,014,712,436	13.01%	6,254	4.99%
Retail trade, except of motor vehicles and motorcycles	709,834,491	9.10%	13,207	10.53%
Wholesale trade, except of motor vehicles and motorcycles	629,409,508	8.07%	9,206	7.34%
Crop and animal production, hunting and related service activities	538,641,103	6.91%	9,275	7.40%
Specialised construction activities	495,815,147	6.36%	15,431	12.31%
Activities of head offices; management consultancy activities	422,352,884	5.41%	4,601	3.67%
Human health activities	417,186,639	5.35%	8,516	6.79%
Financial service activities, except insurance and pension funding	279,436,688	3.58%	1,583	1.26%
Construction of buildings	265,218,678	3.40%	3,983	3.18%
Wholesale and retail trade and repair of motor vehicles	253,243,511	3.25%	4,165	3.32%
Food and beverage service activities	218,656,497	2.80%	5,967	4.76%
Legal and accounting activities	209,201,940	2.68%	3,741	2.98%
Land transport and transport via pipelines	189,722,527	2.43%	3,653	2.91%
Manufacture of food products	170,161,835	2.18%	2,224	1.77%
Manufacture of fabricated metal products, except machinery	139,616,050	1.79%	2,303	1.84%
Residential care activities	124,024,902	1.59%	484	0.39%
Architectural and engineering activities; technical testing	123,536,619	1.58%	2,836	2.26%
Accommodation	114,145,540	1.46%	782	0.62%
Computer programming, consultancy and related activities	98,760,449	1.27%	1,913	1.53%
Services to buildings and landscape activities	97,498,407	1.25%	3,022	2.41%
Other personal service activities	95,755,508	1.23%	2,736	2.18%
Activities auxiliary to financial services and insurance activities	80,135,684	1.03%	1,435	1.14%
Rental and leasing activities	78,985,902	1.01%	1,503	1.20%
Warehousing and support activities for transportation	70,423,905	0.90%	591	0.47%
Office administrative, office support and other business support	69,675,578	0.89%	1,124	0.90%
Sports activities and amusement and recreation activities	62,265,648	0.80%	1,172	0.93%
Advertising and market research	58,108,720	0.74%	1,016	0.81%
Civil engineering	48,020,563	0.62%	999	0.80%
Manufacture of other non-metallic mineral products	46,400,091	0.59%	496	0.40%
Activities of membership organisations	44,734,206	0.57%	169	0.13%
Manufacture of machinery and equipment n.e.c.	37,016,935	0.47%	575	0.46%
Manufacture of rubber and plastic products	36,167,714	0.46%	349	0.28%
Manufacture of chemicals and chemical products	36,052,478	0.46%	184	0.15%
Manufacture of furniture	35,457,021	0.45%	559	0.45%
Printing and reproduction of recorded media	34,434,514	0.44%	725	0.58%
Social work activities without accommodation	31,794,002	0.41%	353	0.28%
Manufacture of wood and of products of wood and cork	26,787,974	0.34%	461	0.37%
Waste collection, treatment and disposal activities	25,321,719	0.32%	299	0.24%

Esmee Master Issuer

Pool Characteristics

Portfolio as of: 30-9-2015

13. Sectors (Nace rev.2-2 Digits)

Sector name	Outstanding Principal	%	No. of Loans	%
Veterinary activities	22,025,896	0.28%	607	0.48%
Other professional, scientific and technical activities	20,076,538	0.26%	669	0.53%
Unknown	19,762,141	0.25%	514	0.41%
Motion picture, video and television programme production	19,546,316	0.25%	369	0.29%
Electricity, gas, steam and air conditioning supply	17,616,168	0.23%	79	0.06%
Repair and installation of machinery and equipment	16,819,839	0.22%	367	0.29%
Creative, arts and entertainment activities	16,001,028	0.21%	473	0.38%
Water transport	14,815,925	0.19%	171	0.14%
Education	13,870,565	0.18%	328	0.26%
Manufacture of paper and paper products	13,542,621	0.17%	127	0.10%
Employment activities	13,217,499	0.17%	218	0.17%
Other mining and quarrying	11,762,676	0.15%	70	0.06%
Travel agency, tour operator and other reservation service	11,458,801	0.15%	283	0.23%
Manufacture of textiles	11,263,599	0.14%	215	0.17%
Other manufacturing	10,381,805	0.13%	344	0.27%
Publishing activities	10,351,811	0.13%	157	0.13%
Scientific research and development	10,266,385	0.13%	55	0.04%
Manufacture of electrical equipment	10,182,729	0.13%	152	0.12%
Activities of extraterritorial organisations and bodies/Unknown	10,167,841	0.13%	164	0.13%
Manufacture of beverages	9,930,297	0.13%	111	0.09%
Forestry and logging	9,156,629	0.12%	288	0.23%
Repair of computers and personal and household goods	8,713,106	0.11%	296	0.24%
Manufacture of basic pharmaceutical products	7,767,374	0.10%	68	0.05%
Manufacture of wearing apparel	6,477,028	0.08%	128	0.10%
Postal and courier activities	5,954,499	0.08%	312	0.25%
Information service activities	5,612,597	0.07%	171	0.14%
Manufacture of computer, electronic and optical products	5,006,918	0.06%	107	0.09%
Libraries, archives, museums and other cultural activities	3,813,698	0.05%	42	0.03%
Sewerage	3,681,845	0.05%	56	0.04%
Remediation activities and other waste management services	3,555,671	0.05%	53	0.04%
Security and investigation activities	3,315,418	0.04%	80	0.06%
Gambling and betting activities	3,274,910	0.04%	46	0.04%
Manufacture of tobacco products	3,067,299	0.04%	12	0.01%
Manufacture of motor vehicles, trailers and semi-trailers	2,854,584	0.04%	46	0.04%
Fishing and aquaculture	2,740,725	0.04%	37	0.03%
Activities of households as employers of domestic personnel	2,603,072	0.03%	12	0.01%
Telecommunications	2,420,017	0.03%	115	0.09%
Manufacture of basic metals	2,391,884	0.03%	39	0.03%

Esmee Master Issuer

Pool Characteristics

Portfolio as of: 30-9-2015

13. Sectors (Nace rev.2-2 Digits)

Sector name	Outstanding Principal	%	No. of Loans	%
Manufacture of other transport equipment	2,213,843	0.03%	29	0.02%
Insurance, reinsurance and pension funding	1,209,369	0.02%	15	0.01%
Manufacture of leather and related products	676,203	0.01%	22	0.02%
Air transport	552,078	0.01%	16	0.01%
Programming and broadcasting activities	523,225	0.01%	17	0.01%
Water collection, treatment and supply	212,509	0.00%	3	0.00%
Manufacture of coke and refined petroleum products	189,183	0.00%	7	0.01%
Public administration and defence; compulsory social security	88,245	0.00%	3	0.00%
Mining support service activities	37,880	0.00%	2	0.00%
Undifferentiated goods- and services producing activities	6,809	0.00%	1	0.00%
Extraction of crude petroleum and natural gas	1,596	0.00%	2	0.00%
Total	7,799,892,709	100.00%	125,390	100.00%

Esmee Master Issuer

Pool Characteristics

Portfolio as of: 30-9-2015

14. Arrears

Arrears	Outstanding Principal		No. of Loans	
		%		%
Current	7,643,933,003	98.00%	121,170	96.63%
02 > 0 and <= 30	75,288,722	0.97%	1,413	1.13%
03 > 30 and <= 60	11,982,438	0.15%	176	0.14%
04 > 60 and <= 90	7,867,125	0.10%	137	0.11%
05 > 90 and <= 120	5,080,796	0.07%	109	0.09%
06 > 120 and <= 150	2,304,071	0.03%	48	0.04%
07 > 150 and <= 180	2,743,152	0.04%	53	0.04%
08 > 180	50,693,402	0.65%	2,284	1.82%
Total	7,799,892,709	100.00%	125,390	100.00%

Esmee Master Issuer

Pool Characteristics

Portfolio as of: 30-9-2015

15. Redemption Type

Redemption Type	Outstanding Principal		No. of Loans	
		%		%
Annuity	5,257,650,630	67.41%	104,312	83.19%
Linear	2,460,371,188	31.54%	20,901	16.67%
Bullet	81,870,891	1.05%	177	0.14%
Total	7,799,892,709	100.00%	125,390	100.00%

Esmee Master Issuer

Pool Characteristics

Portfolio as of: 30-9-2015

16. Origination Year

Origination Year	Outstanding Principal	%	No. of Loans	%
2000	28,012,523	0.36%	804	0.64%
2001	35,757,660	0.46%	1,048	0.84%
2002	54,874,422	0.70%	1,043	0.83%
2003	86,331,535	1.11%	1,222	0.97%
2004	93,702,295	1.20%	1,171	0.93%
2005	183,006,482	2.35%	2,183	1.74%
2006	312,484,708	4.01%	3,523	2.81%
2007	443,425,652	5.69%	4,146	3.31%
2008	466,886,496	5.99%	4,757	3.79%
2009	480,704,055	6.16%	4,998	3.99%
2010	668,536,665	8.57%	8,508	6.79%
2011	962,317,188	12.34%	16,765	13.37%
2012	1,008,773,701	12.93%	19,192	15.31%
2013	1,168,422,856	14.98%	22,524	17.96%
2014	1,099,234,564	14.09%	20,499	16.35%
2015	707,421,908	9.07%	13,007	10.37%
Total	7,799,892,709	100.00%	125,390	100.00%

Esmee Master Issuer

Pool Characteristics

Portfolio as of: 30-9-2015

17. Remaining Maturity (years)

Remaining Maturity (years)	Outstanding Principal	%	No. of Loans	%
<=1	403,554,644	5.17%	35,892	28.62%
>1 and <=2	420,325,820	5.39%	23,432	18.69%
>2 and <=3	615,756,936	7.89%	18,693	14.91%
>3 and <=4	695,751,443	8.92%	13,302	10.61%
>4 and <=5	607,918,786	7.79%	8,182	6.53%
>5 and <=6	504,301,337	6.47%	4,455	3.55%
>6 and <=7	505,409,291	6.48%	3,733	2.98%
>7 and <=8	468,906,380	6.01%	3,019	2.41%
>8 and <=9	495,717,397	6.36%	2,579	2.06%
>9 and <=10	391,339,043	5.02%	2,083	1.66%
>10 and <=11	388,938,647	4.99%	1,745	1.39%
>11 and <=12	494,717,631	6.34%	1,918	1.53%
>12 and <=13	435,316,298	5.58%	1,709	1.36%
>13 and <=14	526,855,391	6.75%	1,768	1.41%
>14 and <=15	349,777,231	4.48%	1,168	0.93%
>15 and <=16	192,492,112	2.47%	754	0.60%
>16 and <=17	147,504,496	1.89%	543	0.43%
>17 and <=18	88,123,562	1.13%	220	0.18%
>18 and <=19	44,910,017	0.58%	119	0.09%
>19 and <=20	11,223,484	0.14%	36	0.03%
>20 and <=21	3,753,400	0.05%	16	0.01%
>21 and <=22	2,726,159	0.03%	11	0.01%
>22 and <=23	2,272,738	0.03%	5	0.00%
>23 and <=24	1,411,164	0.02%	4	0.00%
>24 and <=25	889,302	0.01%	4	0.00%
Total	7,799,892,709	100.00%	125,390	100.00%

Esmee Master Issuer

Pool Characteristics

Portfolio as of: 30-9-2015

18. Original Maturity (years)

Original Maturity (years)	Outstanding Principal	%	No. of Loans	%
<=1	180,597,288	2.32%	7,444	5.94%
>1 and <=2	47,044,659	0.60%	4,597	3.67%
>2 and <=3	333,138,944	4.27%	23,975	19.12%
>3 and <=4	434,481,216	5.57%	20,591	16.42%
>4 and <=5	713,061,875	9.14%	22,096	17.62%
>5 and <=6	116,398,453	1.49%	1,928	1.54%
>6 and <=7	399,296,860	5.12%	6,061	4.83%
>7 and <=8	93,238,287	1.20%	1,024	0.82%
>8 and <=9	392,208,271	5.03%	4,578	3.65%
>9 and <=10	1,024,037,162	13.13%	10,652	8.50%
>10 and <=11	86,901,173	1.11%	695	0.55%
>11 and <=12	121,217,709	1.55%	660	0.53%
>12 and <=13	44,623,132	0.57%	298	0.24%
>13 and <=14	578,088,816	7.41%	3,473	2.77%
>14 and <=15	1,643,309,970	21.07%	10,015	7.99%
>15 and <=16	219,370,524	2.81%	807	0.64%
>16 and <=17	69,797,961	0.89%	241	0.19%
>17 and <=18	49,144,004	0.63%	208	0.17%
>18 and <=19	374,446,619	4.80%	1,756	1.40%
>19 and <=20	704,808,684	9.04%	3,788	3.02%
>20 and <=21	117,433,686	1.51%	337	0.27%
>21 and <=22	26,424,580	0.34%	49	0.04%
>22 and <=23	2,144,530	0.03%	7	0.01%
>23 and <=24	5,744,228	0.07%	19	0.02%
>24 and <=25	14,264,822	0.18%	70	0.06%
>25	8,669,259	0.11%	21	0.02%
Total	7,799,892,709	100.00%	125,390	100.00%

Esmee Master Issuer

Pool Characteristics

Portfolio as of: 30-9-2015

19. LGD

LGD Range (%)	Outstanding Principal	%	No. of Loans	%
>0 and <=10	6,155,460	0.08%	24	0.02%
>10 and <=20	5,478,375,698	70.24%	77,036	61.44%
>20 and <=30	1,023,362,281	13.12%	11,735	9.36%
>30 and <=40	630,516,519	8.08%	10,466	8.35%
>40 and <=50	341,698,874	4.38%	8,975	7.16%
>50 and <=60	203,587,772	2.61%	7,117	5.68%
>60 and <=70	77,597,576	0.99%	7,980	6.36%
>70 and <=80	22,018,860	0.28%	734	0.59%
>80	16,552,663	0.21%	1,181	0.95%
Unknown	27,005	0.00%	142	0.11%
Total	7,799,892,709	100.00%	125,390	100.00%

Esmee Master Issuer

Pool Characteristics

Portfolio as of: 30-9-2015

20. Size of Loans

Range (eur 1000)	Outstanding Principal	%	No. of Loans	%
<=100	2,204,190,873	28.26%	106,471	84.91%
>100 and <=200	1,444,620,381	18.52%	10,200	8.13%
>200 and <=300	963,820,140	12.36%	3,961	3.16%
>300 and <=400	607,029,466	7.78%	1,757	1.40%
>400 and <=500	414,511,606	5.31%	930	0.74%
>500 and <=600	314,616,998	4.03%	576	0.46%
>600 and <=700	235,953,196	3.03%	365	0.29%
>700 and <=800	190,951,007	2.45%	255	0.20%
>800 and <=900	158,989,906	2.04%	187	0.15%
>900 and <=1000	128,704,287	1.65%	136	0.11%
>1000 and <=1100	71,894,655	0.92%	69	0.06%
>1100 and <=1200	68,008,103	0.87%	59	0.05%
>1200 and <=1300	62,527,725	0.80%	50	0.04%
>1300 and <=1400	65,199,329	0.84%	48	0.04%
>1400 and <=1500	65,477,163	0.84%	45	0.04%
>1500 and <=1600	37,201,711	0.48%	24	0.02%
>1600 and <=1700	28,193,336	0.36%	17	0.01%
>1700 and <=1800	61,092,557	0.78%	35	0.03%
>1800 and <=1900	51,909,841	0.67%	28	0.02%
>1900 and <=2000	45,181,413	0.58%	23	0.02%
>2000 and <=2100	28,690,677	0.37%	14	0.01%
>2100 and <=2200	31,978,363	0.41%	15	0.01%
>2200 and <=2300	17,947,849	0.23%	8	0.01%
>2300 and <=2400	28,306,287	0.36%	12	0.01%
>2400 and <=2500	19,660,635	0.25%	8	0.01%
>2500 and <=2600	12,767,802	0.16%	5	0.00%
>2600 and <=2700	21,277,708	0.27%	8	0.01%
>2700 and <=2800	16,445,048	0.21%	6	0.00%
>2800 and <=2900	14,330,679	0.18%	5	0.00%
>2900 and <=3000	14,921,293	0.19%	5	0.00%
>3000	373,492,676	4.79%	68	0.05%
Total	7,799,892,709	100.00%	125,390	100.00%

Esmee Master Issuer

Pool Characteristics

Portfolio as of: 30-9-2015

21. Collateral Ratio

Range (%)	Outstanding Principal	%	No. of Loans	%
>0 and <=10	140,285,568	1.80%	791	0.63%
>10 and <=20	36,785,102	0.47%	389	0.31%
>20 and <=30	54,222,996	0.70%	621	0.50%
>30 and <=40	59,203,791	0.76%	751	0.60%
>40 and <=50	66,507,106	0.85%	852	0.68%
>50 and <=60	103,730,303	1.33%	1,122	0.89%
>60 and <=70	101,735,231	1.30%	1,337	1.07%
>70 and <=80	103,688,211	1.33%	1,561	1.24%
>80 and <=90	137,340,223	1.76%	1,874	1.49%
>90 and <=100	171,695,327	2.20%	2,388	1.90%
>100 and <=110	240,193,138	3.08%	2,974	2.37%
>110 and <=120	445,086,002	5.71%	3,925	3.13%
>120 and <=130	509,485,736	6.53%	4,385	3.50%
>130 and <=140	521,796,252	6.69%	4,603	3.67%
>140 and <=150	466,840,959	5.99%	4,271	3.41%
>150 and <=160	403,040,517	5.17%	3,544	2.83%
>160 and <=170	348,686,549	4.47%	3,344	2.67%
>170 and <=180	260,100,751	3.33%	2,807	2.24%
>180 and <=190	208,342,579	2.67%	2,613	2.08%
>190 and <=200	206,912,872	2.65%	2,398	1.91%
>200	2,542,910,585	32.60%	61,287	48.88%
NoCollateral	671,302,912	8.61%	17,553	14.00%
Total	7,799,892,709	100.00%	125,390	100.00%

Esmee Master Issuer

Pool Characteristics

Portfolio as of: 30-9-2015

22. Collaterals

Collateral Type	Amount	%
Mortgage Mandate	8,483,834,792	44.92%
Aval & Related Guarantee	3,089,834,724	16.36%
Mortgage	3,087,959,799	16.35%
Other Mandate	903,991,468	4.79%
Business Pledge	1,053,752,222	5.58%
Other Pledge	2,065,623,598	10.94%
Security Pledge	122,608,962	0.65%
State Guarantee	0	0.00%
Cash Pledge	79,550,211	0.42%
Total	18,887,155,775	100.00%

Esmee Master Issuer

Pool Characteristics

Portfolio as of: 30-9-2015

23. Yearly Expected Loss

Range (%)	Outstanding Principal	%	No. of Loans	%
>0 and <=2	1,861,326,462	23.86%	27,531	21.96%
>2 and <=4	1,425,355,325	18.27%	19,783	15.78%
>4 and <=6	725,390,018	9.30%	10,597	8.45%
>6 and <=8	476,877,900	6.11%	7,204	5.75%
>8 and <=10	352,097,747	4.51%	5,424	4.33%
>10 and <=12	327,990,809	4.21%	5,088	4.06%
>12 and <=14	257,301,921	3.30%	4,330	3.45%
>14 and <=16	281,415,149	3.61%	4,149	3.31%
>16 and <=18	177,861,778	2.28%	3,138	2.50%
>18 and <=20	167,351,430	2.15%	2,802	2.23%
>20 and <=22	152,546,054	1.96%	2,447	1.95%
>22 and <=24	132,618,162	1.70%	1,832	1.46%
>24 and <=26	94,568,657	1.21%	1,746	1.39%
>26 and <=28	82,952,826	1.06%	1,666	1.33%
>28 and <=30	71,577,265	0.92%	1,368	1.09%
>30 and <=32	72,393,771	0.93%	1,317	1.05%
>32 and <=34	62,256,064	0.80%	1,123	0.90%
>34 and <=36	44,932,980	0.58%	881	0.70%
>36 and <=38	45,355,973	0.58%	897	0.72%
>38 and <=40	42,252,822	0.54%	897	0.72%
>40 and <=42	35,157,460	0.45%	761	0.61%
>42 and <=44	33,466,600	0.43%	651	0.52%
>44 and <=46	33,053,371	0.42%	644	0.51%
>46 and <=48	26,351,741	0.34%	667	0.53%
>48 and <=50	32,125,659	0.41%	552	0.44%
>50 and <=52	52,459,020	0.67%	687	0.55%
>52 and <=54	24,209,961	0.31%	538	0.43%
>54 and <=56	18,747,341	0.24%	514	0.41%
>56	689,871,440	8.84%	16,014	12.77%
Unknown	27,005	0.00%	142	0.11%
Total	7,799,892,709	100.00%	125,390	100.00%